

26, Roundway, Shrewsbury, SY3 7TG
£875 Per Month



26, Roundway, Shrewsbury, SY3 7TG

£875 Per Month

VIRTUAL TOUR AVAILABLE: Newly decorated three bedroom mid terraced house, with a south facing garden in a quiet residential location a short distance to the south of Shrewsbury town centre. Close to local amenities and providing excellent access to local road links. Includes off road parking for two vehicles.

Available: Immediately

Description

Comprising: Entrance hall, living room including understairs storage cupboard, kitchen including freestanding double oven & hob, fridge/freezer, double doors to rear. Stairs to first floor landing including airing cupboard, two double bedrooms, one single bedrooms, bathroom including shower. Gas central heating, double glazing. South facing rear garden. Parking for two cars. EPC TBC

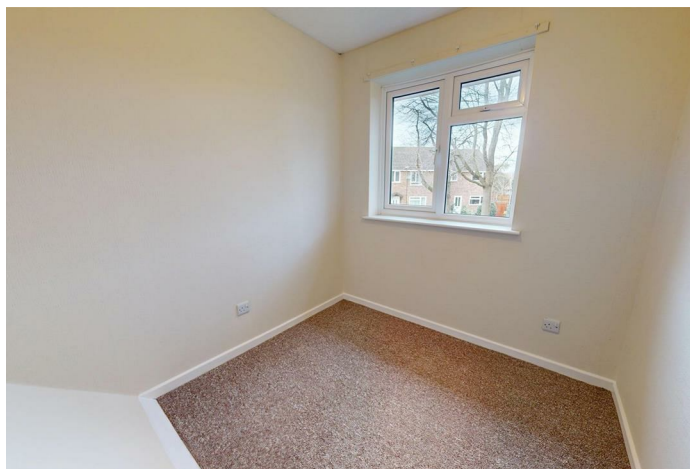


Unfurnished

Council Tax Band: B

Available: 31st January 2026

EPC:



Floor Plans



These particulars, whilst believed to be accurate are set out as a general outline only for guidance and do not constitute any part of an offer or contract. Intending purchasers should not rely on them as statements of representation of fact, but must satisfy themselves by inspection or otherwise as to their accuracy. No person in this firms employment has the authority to make or give any representation or warranty in respect of the property.